

# Program Manager's Report

## January 10, 2011



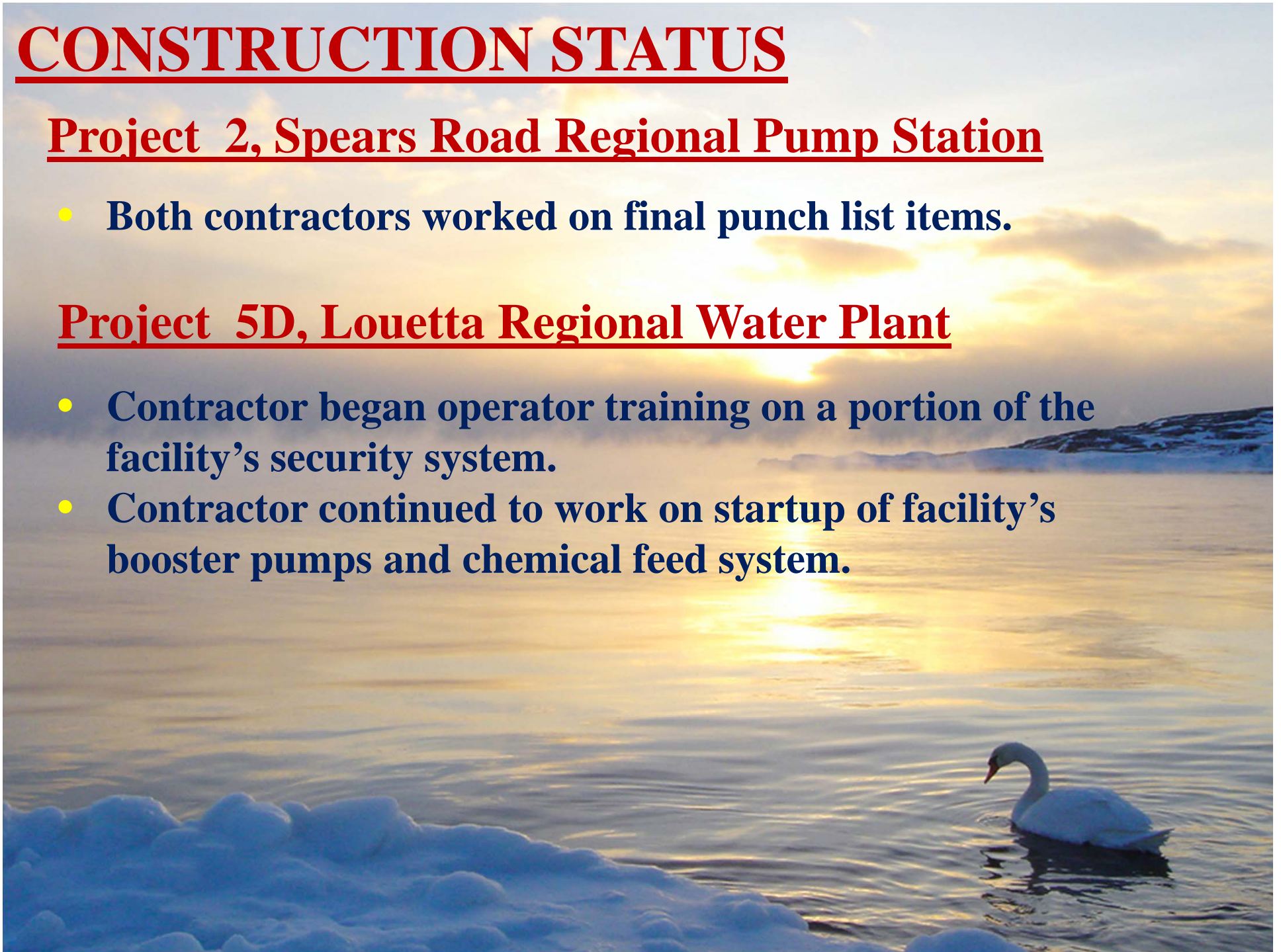
# **CONSTRUCTION STATUS**

## **Project 2, Spears Road Regional Pump Station**

- **Both contractors worked on final punch list items.**

## **Project 5D, Louetta Regional Water Plant**

- **Contractor began operator training on a portion of the facility's security system.**
- **Contractor continued to work on startup of facility's booster pumps and chemical feed system.**



# CONSTRUCTION STATUS

## Project 6B-3

- Contractor worked on turf establishment.

## Projects 7C-4 Contract I and 10B

- Project finalization ongoing.



# **SURFACE WATER CONVERSION**

- **Delivered water to four (4) additional Public Water Systems (“PWSs”) increasing the number of PWSs receiving surface water to 58. Surface water will be delivered to the remaining two (2) PWSs when each is ready.**
- **During the reporting period Spears Road Regional Pump Station delivered an average of approximately 21.7 MGD.**
- **Based on information available, the number of PWS customer complaints being received concerning taste, odor and discoloration continues to decrease .**

# SURFACE WATER CONVERSION

- The Authority's specialty consultant is working on three (3) assignments.
- Based on information currently available for the period September through November 2010
  - Approximately 28% of the reported water used was alternate water, i.e. surface water, etc.
  - Used approximately 100 million gallons less alternate water than needed to reach the 30% target.

# MAJOR ACTIVITIES

- Continued oversight of engineering efforts.
- Provided construction administration services and project representative services as required.
- Provided oversight of Severn Trent Environmental Services (“STES”) and its contract to operate the Authority’s system.
- Continued to assist the Authority in coordination of the delivery of surface water to PWSs in the 2010 service area.
- Monitored, tabulated and analyzed water use by PWSs covered by the Authority’s aggregate water well permit.

## **MAJOR ACTIVITIES**

- Identified PWSs whose surface water usage was lower than anticipated and advised STES who
  - Advised PWS's operator of the need to increase use of surface water;
  - Where necessary helped determine possible cause of lower usage, and
  - When possible assisted to help increase surface water usage.
- Assisted the Authority in implementing and performing related tasks regarding its aggregate water well permit.
- Evaluated submittals requesting Chloramination Credits.